

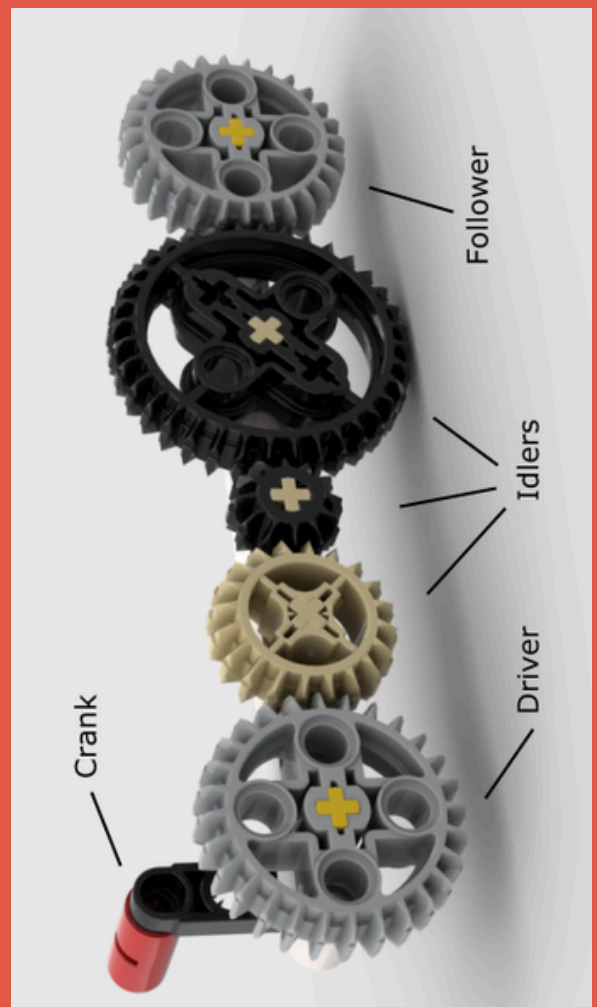
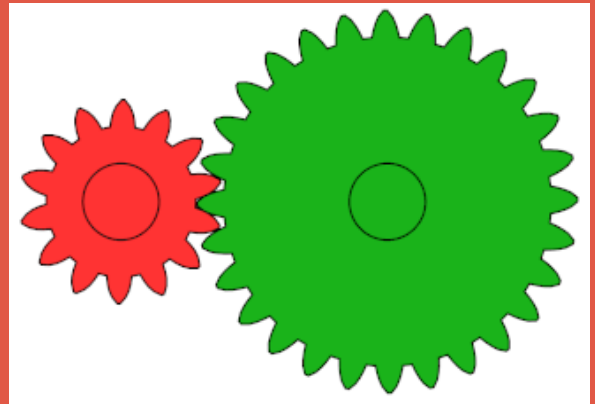
Gears!

Gears can be used to change the strength and speed of your motors and attachments.

Small gears meshing into big gears make the system slower but stronger.

Big gears meshing into small gears make the system faster but weaker.

You could use a gears to improve the speed or strength of your robot!

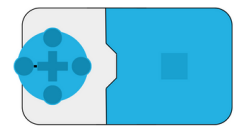


Motors

You can change the speed by the arrows of the Hub

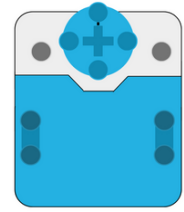
Motors can be used continuously or for a controlled time

Each kit has:



2 SMALL motors

1 BIG motor



Motors can be used in more than one way.
examples include:

Sensors

You can use if statements in your code for different scenarios

Sensors can help decide when to add/decrease movement in your robot

Each kit has:



1 Distance Sensor

1 Force Sensor



1 Color Sensor



Each sensor has a unique aspect to help guide the robot to the action that it should complete

Wheels & Axis!

Wheels can be used to add ***movement*** to your robot! Axis pieces allow wheels and gears to spin when attached to a ***motor*** or to ***each other***.

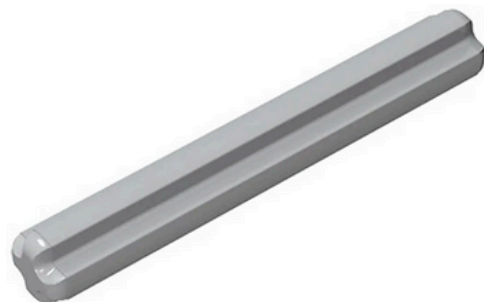
In order to attach wheels or gears to your robot, you'll need an axis piece.

These pieces are the + shaped pieces in your kit.

These pieces fit into the + shaped hole in wheels, gears, motors, and more. It should look something like this when attached:



Wheel



Axis

